

CATALOGUE



DIAGAST

The blood matching company

OPEN QUESTIONS to Bruno Morino

What is the outlook for DIAGAST ?

DIAGAST is a French company developing its blood-matching expertise and know-how in international markets. We offer ranges of high-performance products and services, guaranteeing the quality of transfusion diagnostics and patient safety.

Faced with competition from international groups, our strength lies in our ability to react flexibly and to continuously offer creative solutions, thanks to the commitment of our multicultural workforce. This source of innovation is the result of our expertise and technological know-how. DIAGAST has been developing a culture of performance and excellence towards all its business partners for over 30 years and in 100 countries worldwide.

Between 2014 and 2018, DIAGAST will focus its development in two main areas: firstly internationally, with strong growth in the BRIC countries (Brazil, Russia, India and China), where we have made significant progress.

The second area is the marketing of new product ranges which will complete our existing immunohematology ranges while remaining true to our core business: the blood transfusion sector. This growth strategy will go hand-in-hand with a personalised customer approach.

Furthermore, we have the world's largest production capacity of monoclonal antibodies in Immunohematology. Our know-how – recognised by our peers – provides us with the undoubted ability to gain new markets and enjoy renewed growth.

What has been your main focus since becoming CEO of DIAGAST ?

Having worked at DIAGAST for 15 years, I already know the system and the personnel here very well. Following my appointment as CEO in December 2011, I quickly got to grips with a number of priority issues.

The first project was obviously the implementation of a new development plan for DIAGAST to ensure that it is able to make significant growth through innovation. This is the very nature of the challenge for an organisation such as ours: continuous innovation! Through such ongoing projects, we will double our sales within 5 years.

Internal communication is another issue that means a lot to me. I am convinced of the importance of synergy existing among the company's employees: a sense of belonging is essential to effectively combine our values.



Do you have an example ?

A good illustration of our synergy? The «Défis fous» projects. At DIAGAST these are projects proposed by employees from various departments which are supported by the company. For example, participating in a race or artistic activities may be selected projects. The idea is to enable employees to unite around a team project and to put into practice the values of boldness, team spirit and results orientation which characterise our company.

Bruno MORINO
DIAGAST CEO

CONTACT

DIAGAST

DIAGAST headquarters

251, avenue Eugène Avinée - 59120 LOOS - FRANCE

Tel. : +33 (0)3 20 96 53 53 - Fax : +33 (0)3 20 96 53 54 - contact@diagast.com

DIAGAST Ibérica S.L.

Soberanía 2, 2ºA - 28260 Galapagar (MADRID)

Antonio Campos - Tel. : (+34) 91 858 38 88 - acampos@diagast.com

DIAGAST India

D-304, Sushant Shopping Arcade - Sushant Lok I - GURGAON 122001 Haryana

Mr. Rajeev PANT - rpant@diagast.in

Tel. : + 91 124 4255351 - Fax : +91 124 4255355

Order department

Export - orders@diagast.com - Tel. : +33 (0)3 20 96 53 79

France - commandes@diagast.com - Tel. : +33 (0)3 20 96 53 72

International hotline and after sales services

hotline@diagast.com - Tel. : +33 (0)3 20 96 53 65

Training Centre

trainingcentre@diagast.com - Tel. : +33 (0)3 20 96 53 67

www.diagast.com

Please visit our website to have more business or technical information: our worldwide favorite business partners, our technical inserts, etc...

SUMMARY



P. 4-15

E.M.® TECHNOLOGY



P. 16-19

PK® RANGE



P. 20-28

MANUAL RANGE



P. 29-30

QUALITY CONTROLS



P. 31-33

BEDSIDE CARD



P. 34-38

O.E.M. RANGE



P. 39-40

TRAINING CENTRE

E.M.® TECHNOLOGY



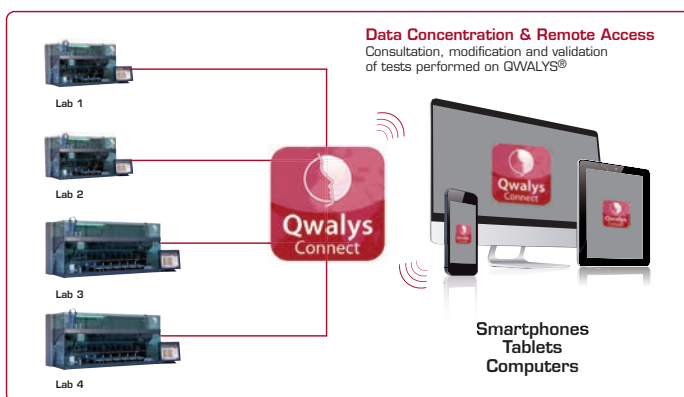


Instrument

Designation	Reference	Description
QWALYS® 3	90854	L = 150 cm / 8 needles
QWALYS® Connect	90860	1 Unit
<i>Middleware for the remote consultation & validation of tests performed on QWALYS®</i>		

QWALYS® Connect is the right solution for multi-sites, multi-QWALYS® laboratories. QWALYS® Connect is a complete data management solution for monitoring single or multiple QWALYS® systems :

- data concentration,
- real-time data backup and storage,
- multi-LIS connection management,
- real-time communication between QWALYS® systems,
- remote access application to consult, modify and validate results.



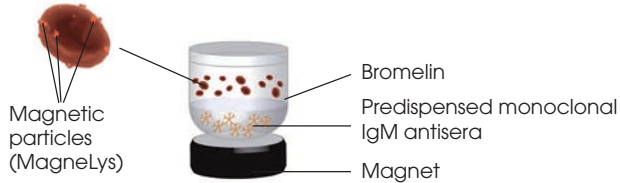
Accessories

QWALYS® cover	91355	1 Unit
Table QWALYS®	91320	1 Unit
QWALYS® Sample Rack 10mm	90775	6 Units
QWALYS® Sample Rack 13mm	90776	6 Units
QWALYS® Pediatric Rack	90780	1 Unit
QWALYS® CSV Carrier	91179	1 Unit
QWALYS® C6V Carrier	91178	1 Unit
Manual Barcode Scanner QWALYS	91402	1 Unit
Printer	90706	1 Unit
Touchscreen 17''	91339	1 Unit
Carrier Barcodes for QWALYS 3®	91333	1 Unit
QWALYS® Liquid System Container	90713	1 Unit
QWALYS® Waste Container	91227	1 Unit
3 Bottles for Weekly Maintenance	91321	1 Unit
Weekly Maintenance Kit	91251	1 Unit

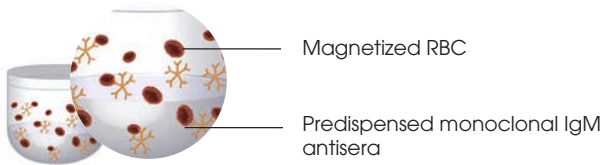
E.M.[®] TECHNOLOGY

Grouping and Phenotyping

Patient Red Blood Cells (RBC)



1% dilution of RBC in bromelain and Magnelys. Dispensing in the microplate



Shaking: rehydration of antisera and contact with RBC antigens
Incubation at room temperature



Magnetization: Attraction of RBC by magnetic field to the bottom of the well

Shaking

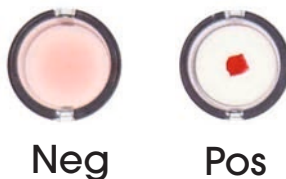


Positive reaction: Agglutination



Negative reaction:
No Agglutination

Interpretation





Grouping and Phenotyping

Ready-to-use reagents on microplates

Designation	Reference	Quantity	Configuration
DuoLys <i>12 microplates of 8 tests, MagneLys 40 mL</i>	79960	96 tests	■ A B AB D C c E e K Ctl □ □
ABD-Lys <i>10 microplates of 16 tests, MagneLys 40 mL</i>	79967	160 tests	■ A B D Ctl □ □ A B D Ctl □ □
Groupa 2 Lys <i>12 microplates of 8 tests, MagneLys 40 mL</i>	79964	96 tests	■ A B AB D1 D2 Ctl □ □ □ □ □ □
Groupa DVI Lys <i>12 microplates of 8 tests, MagneLys 40 mL</i>	79969	96 tests	■ A B AB D1 D3 Ctl □ □ □ □ □ □ <small>(DVI → (DVI →))</small>
Groupa CDE Lys** <i>12 microplates of 8 tests, MagneLys 40 mL</i>	79968	96 tests	■ A B AB D CDE Ctl □ □ □ □ □ □
PhenoLys <i>12 microplates of 16 tests, MagneLys 40 mL</i>	79962	192 tests	■ C c E e K Ctl C c E e K Ctl
Pheno 1,2 Lys** <i>12 microplates of 8 tests, MagneLys 40 mL</i>	79966	96 tests	■ C1 c1 E1 e1 K1 Ctl C2 c2 E2 e2 K2 Ctl
Groupa A1 Lys <i>12 microplates of 8 tests</i>	79965	96 tests	■ A A1 B AB D1 D2 Ctl □ □ □ □ □

Reverse Typing Red Blood Cells*

HEMALYS 1 A1, B <i>Magnetized A1 and B (2 x 5 mL)</i>	59659	2 x 5 mL
HEMALYS 1 A1, A2, B, O <i>Magnetized red blood cells A1, A2, B and O (4 x 5 mL)</i>	59661	4 x 5 mL

Diluents

BROMELINE	69024	1 x 100 mL
	69860	5 x 100 mL
MagneLys	79900	1 x 40 mL

Dilution plates

D-Plates <i>10 plates for the red blood cells dilution on QWALYS®</i>	79851	960 tests
--	-------	-----------

Internal Quality Control*

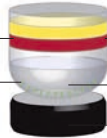
HEMA CQI <i>See details on page 29</i>	59500	4 x 4 mL
---	-------	----------

*On subscription ** Manufacturing on request

Weak-D and Antigens Typing

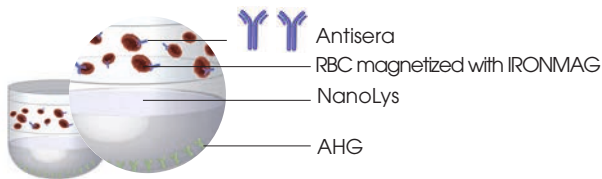
Patient RBC magnetized
«on board» with IRONMAG

AHG : Anti-IgG + Anti-IgM

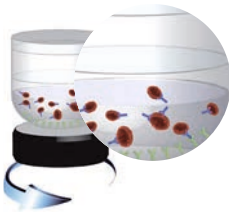


Antisera (Anti-D_{WEAK}, Anti-Fya,
Anti-Fyb, Anti-Jka, Anti-Jkb, Anti-S, Anti-s)

NanoLys
Magnet



Incubation at 37°C:
Antisera bind to RBC Antigens



Magnetic shaking: Magnetic field + shaking. The magnetized RBC cross the NanoLys (high density barrier); no influence of magnetic field on free antibodies that remain blocked at the surface on NanoLys.

No washing step.



4+

Positive reaction: Layer

Antibodies fix the corresponding antigen on the magnetized RBC:
Reaction with AHG.



Neg

Negative reaction: Clear dot

If there is no antigen:
No reaction with AHG, the RBC create a dot.

Interpretation



Neg



Pos

ANTIGENS DETECTION



Weak-D test

Ready-to-use reagents on microplates

Designation	Reference	Quantity
WEAK-D kit	20400	1 kit
<i>WEAK-D kit includes QR Anti-D WEAK (20401) AND QR NEG CONTROL (20507)</i>		
QR Anti-D WEAK	20401	1 x 3.5 mL
QR NEG CONTROL	20507	1 x 3.5 mL

Antigens recognition diagram of Qr Anti-D WEAK clones

Clone	Type	Weak D 1, 2, 3	Partial D													
			DOL	II	IIIa, IIIb, IIIc	IVa	IVb	Va	VI	VII	DCS	DFR	DNB	DAR	DHK (DYO)& DAU-4	HMI
P3X35	IgG	+	+/-	+	+	+	+	-	-	+	+	-	+	+	-	+
ESD1	IgG	+	+	+	+	-	-	+	+	+	+	+	+	+	+	+

Antigens Typing

Ready-to-use reagents on microplates

Antigens typing kit	20510	1 kit
<i>Antigens typing kit includes QR Anti-Fya, QR Anti-Fyb, QR Anti-Jka, QR Anti-Jkb, QR Anti-S, QR Anti-s, QR NEG CONTROL</i>		

QR Anti-Fya	20501	1 x 2.3 mL
QR Anti-Fyb	20509	1 x 2.3 mL
QR Anti-Jka	20503	1 x 2.3 mL
QR Anti-Jkb	20504	1 x 2.3 mL
QR Anti-S	20505	1 x 2.3 mL
QR Anti-s	20506	1 x 2.3 mL
QR NEG CONTROL	20507	1 x 3.5 mL



Cellano NEW

Ready-to-use reagents on microplates

QR Anti-k (KEL2)**	20508	1 x 2.3 mL
QR NEG CONTROL	20507	1 x 3.5 mL

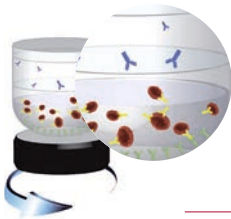
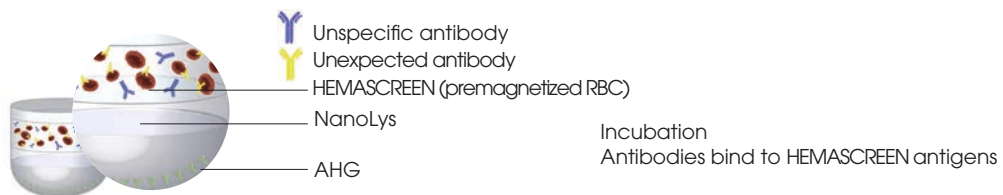
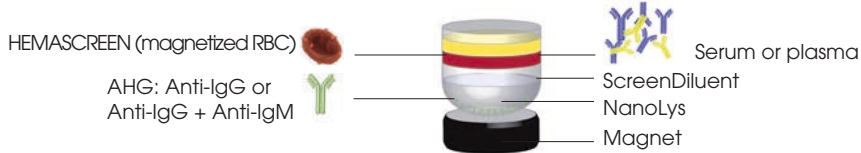
QR range : QWALYS® reagents range

Microplates and associated reagents

Designation	Reference	Quantity	Description	Tests Weak D	Tests AT	Tests Cellano
CrossLys	79854	8 plates	Microplates coated with AHG anti-IgG + anti-IgM	384	64	384
NanoLys	69305	8 x 8 mL	Buffer	*	*	*
IRONMAG	20000	16 x 4 mL		*	*	*
DiluentLys	69301	1 x 100 mL		*	*	*
Mag-Plates	69302	576 tests	12 dilution plates (48 dilutions/plate)	*		*
D-Plates	79851	480 tests	10 dilution plates (48 dilutions/plate)		*	

E.M.[®] TECHNOLOGY

Antibody Screening (A.B.S.)



Magnetic shaking: Magnetic field + shaking. The HEMASCREEN cross the NanoLys (high density barrier): no influence of the magnetic field on unspecific antibodies. The unspecific globulins remain blocked at the surface of the NanoLys.

No washing step



4+

Positive reaction: Layer

Unexpected antibodies fixed on HEMASCREEN:
Reaction with AHG.



Neg

Negative reaction: Clear dot

No unexpected antibodies:
No reaction with AHG: the HEMASCREEN create a dot.

Interpretation



Neg



Pos



Antibody Screening (A.B.S.)

Ready-to-use reagents on microplates

Designation	Reference	Quantity
ScreenLys <i>6 AHG anti-IgG coated plates</i> <i>NanoLys (7 x 8 mL), ScreenDiluent (50 mL)</i>	79853	48 tests - Identification 192 tests - Antibody Screening 576 tests - Donor Antibody Screening

Red Blood Cells Panels*

HEMASCREEN Pool <i>Pool of magnetized red blood cells</i>	59550	4 x 4.5 mL
HEMASCREEN <i>Panel of 3 magnetized red blood cells</i>	59852	3 x 4.5 mL
HEMA-IDENT <i>Panel of 11 magnetized red blood cells</i>	59855	11 x 4.5 mL

Reagents

NanoLys	69305	8 x 8 mL
ScreenDiluent	69306	1 x 50 mL
IRONMAG	20000	16 x 4 mL

Internal Quality Control*

SERA CQI <i>See details on page 29</i>	59502	3 x 5 mL
---	-------	----------

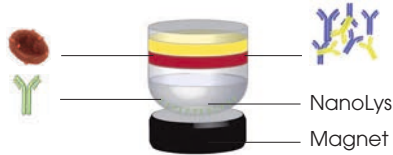


*On subscription

E.M.® TECHNOLOGY

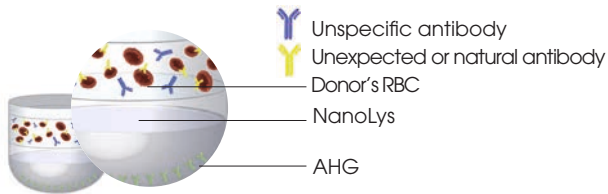
Crossmatch

Donor's RBC magnetized «onboard» with IRONMAG
AHG: Anti-IgG + Anti-IgM

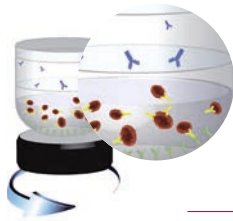


Patient recipient's serum or plasma

NanoLys
Magnet



Incubation at room temperature and 37°C
Antibodies bind to donor's RBC



Magnetic shaking: Magnetic field + shaking. The magnetized donor's RBC cross the NanoLys (high density barrier); no influence of the magnetic field on unspecific antibodies that remain blocked at the surface of the NanoLys.

No washing step



4+

Positive reaction: Layer

Recipient's antibodies fix donor's RBC: Reaction with AHG.

Do not transfuse blood



Neg

Negative reaction: Clear dot

No RBC antibodies:
No reaction with AHG: donor's RBC create a dot

Transfusion may be performed

Interpretation



Neg



Pos



Crossmatch

Ready-to-use reagents on microplates

Designation	Reference	Quantity
CrossLys <i>8 AHG anti-IgG and anti-IgM coated plates</i>	79854	768 tests
DiluentLys	69301	1 x 100 mL
Mag-Plates <i>12 dilution plates (48 dilutions /plate)</i>	69302	576 tests
IRONMAG	20000	16 x 4 mL
NanoLys	69305	8 x 8 mL

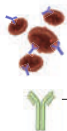
Associated material

Tubes 11 mm	79886	2 880 tubes
Securitubes <i>Blood segment device</i>	96226	1 000 units

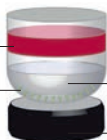
E.M.[®] TECHNOLOGY

Direct Coombs

Patient RBC magnetized
«on board» with IRONMAG

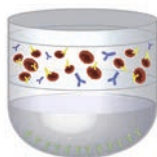


AHG: Anti-IgG or Anti-C3d



NanoLys

Magnet



Incubation at room temperature



Magnetic shaking
Only magnetized RBC go through
the NanoLys



4+

Positive reaction: layer

If the RBC have already been sensitized
in vivo: reaction with AHG



Neg

Negative reaction: clear dot

No in vivo sensitization

Interpretation



Neg



Pos



Direct Coombs

Ready-to-use reagents on microplates

Designation	Reference	Quantity	Configuration
DC-Lys <i>8 AHG coated plates</i>	79300	256 tests	■ IgG C3D Ctl IgG C3D Ctl IgG C3D Ctl IgG C3D Ctl ■
DiluentLys	69301	1 x 100 mL	
Mag-Plates <i>12 dilution plates (48 dilutions /plate)</i>	69302	576 tests	
IRONMAG	20 000	16 x 4 mL	
NanoLys	69305	8 x 8 mL	

Disposables

CleanLys <i>Decontamination solution for QWALYS®</i>	20700	1 L
Dilution container	91329	1 unit
Adhesiplates <i>Microplate adhesive sealing sheet</i>	79849	500 units

Internal Quality Control*

CQI TDA <i>See details on page 29</i>	59509	2 x 6 mL
--	-------	----------



*On subscription

PK[®]RANGE



Every year, more than 55 million tests are performed with DIAGAST reagents for PK[®] systems all over the world. Beckman Coulter Inc. is the exclusive distributor of the DIAGAST PK[®] 7300 reagents in North America, Canada and Australia.



Grouping

1st determination

Designation	Reference	Quantity	Clones
ANTI-A (PK1)	73001	10 x 20 mL	2521B8 + 16243G2
ANTI-B (PK1)	73002	10 x 20 mL	9621A8
ANTI-AB (PK1)	73003	10 x 20 mL	2521B8 + 16243G2 + 16247E10 + 7821D9
ANTI-D TOTEM PK	73004	10 x 20 mL	P3x61 + P3x21223B10 + P3x290 + P3x35
ANTI-D (PK1)	73005	10 x 20 mL	P3x61

Ready-to-use red blood cells*

HEMA CELLS A1, B (PK1)	73041	4 x 20 mL
HEMA CELLS A2 (PK1)	73051	4 x 20 mL
HEMA CELLS O (PK1)	73061	4 x 20 mL

2nd determination

ANTI-A (PK2)	73201	10 x 20 mL	9113D10
ANTI-B (PK2)	73202	10 x 20 mL	164B5G10 + 7821D9
ANTI-AB (PK2)	73203	10 x 20 mL	152D12 + 9113D10
ANTI-D (PK2)	73204	10 x 20 mL	HM10

Ready-to-use red blood cells*

HEMA CELLS A1, B (PK2)	73040	4 x 20 mL
HEMA CELLS A2 (PK2)	73050	4 x 20 mL
HEMA CELLS O (PK2)	73060	4 x 20 mL



With the vial of 20 mL you can perform 675 tests

PK[®] RANGE 7300

RH - KELL Phenotyping

1st determination

Designation	Reference	Quantity	Clones
ANTI-C (PK1)	73016	4 x 20 mL	P3x25513G8 + MS24
ANTI-E (PK1)	73027	4 x 20 mL	906
ANTI-c (PK1)	73008	4 x 20 mL	MS33
ANTI-e (PK1)	73009	4 x 20 mL	P3GD512 + MS63
ANTI-K (PK1)	73010	4 x 20 mL	MS56

2nd determination

ANTI-C (PK2)	73225	4 x 20 mL	DGC02
ANTI-E (PK2)	73206	4 x 20 mL	P3x234 + MS258
ANTI-c (PK2)	73207	4 x 20 mL	951
ANTI-e (PK2)	73208	4 x 20 mL	HS128 + MS21
ANTI-K (PK2)	73209	4 x 20 mL	601

Control PK

CONTROL PK	73000	10 x 20 mL	Negative control
------------	-------	------------	------------------

Ready-to-use Bromelin

BROMELINE PK	73300	6 x 900 mL	
--------------	-------	------------	--



With the vial of 20 mL you can perform 675 tests.



Extended phenotyping

Designation	Reference	Quantity	Clones
ANTI-Fya (FY1) PK	73020	20 mL	DG-FYA-02
ANTI-Fyb (FY2) PK	73021	20 mL	SpA264LBg1
ANTI-Jka (JK1) PK	73022	20 mL	P3HT7
ANTI-Jkb (JK2) PK	73023	20 mL	P3.143
ANTI-S (MNS3) PK	73024	20 mL	P3S13JS123
ANTI-s (MNS4) PK	73025	20 mL	P3YAN3

Associated reagents

Designation	Reference	Quantity	Clones
NEG CONTROL PK	73026	20 mL	Negative control
AHG ANTI-IgG PK	73028	20 mL	18833 + 18896
LISS PK	73029	900 mL	Low Ionic Strength Solution

Extended Typing PK 73035 675 tests
 (this kit includes 1 ANTI-Fya, 1 ANTI-Fyb, 1 ANTI-Jka, 1 ANTI-Jkb, 1 ANTI-S, 1 ANTI-s, 1 NEG CONTROL, 4 AHG ANTI-IgG PK, 2 LISS PK)

	Fya	Fyb	Jka	Jkb	S	s	Control
Clone	DG-FYA-02	SpA264LBg1	P3HT7	P3.143	P3S13JS123	P3YAN3	NA
Ig Class (R1 position)	IgG	IgM	IgM	IgM	IgG	IgG	NA
Maestria® AGH (R2 position)	X				X	X	X



With the vial of 20 mL you can perform 675 tests.

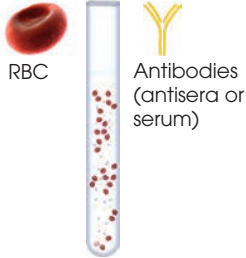
MANUAL RANGE



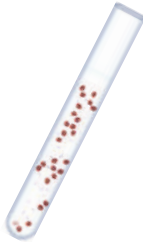


Hemagglutination

Mix of Red Blood Cells suspension with antisera



Shaking: homogenization of the suspension

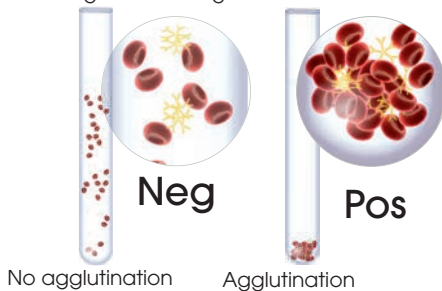


Centrifugation



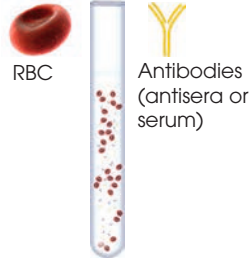
Reading and interpretation

Gentle shaking and reading



Indirect Antiglobulin Test

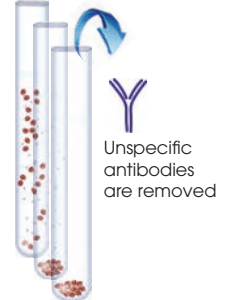
Mix of Red Blood Cells and antibodies



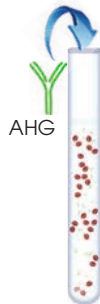
Incubation at 37°C



Washing



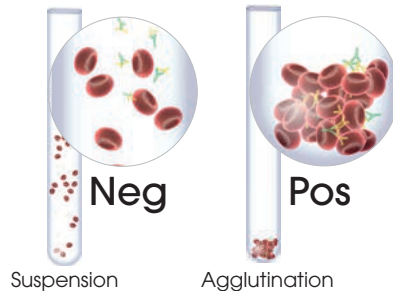
AHG dispensing



Centrifugation



Reading and interpretation



MANUAL RANGE

Grouping

Designation	Reference	Quantity	Clones
ANTI-A (ABO1)	70501	5 x 10 mL	9113D10
	70540	100 x 10 mL	9113D10
ANTI-B (ABO2)	70502	5 x 10 mL	9621A8
	70541	100 x 10 mL	9621A8
ANTI-A,B (ABO3)	70503	5 x 10 mL	152D12 + 9113D10
NEG CONTROL	79000	5 x 10 mL	Negative control

Grouping kit

GROUPAKIT	70888	5 x 10 mL	9113D10 + 9621A8 + 152D12 + 9113D10 + P3x61
-----------	-------	-----------	---

Includes ANTI-A (ABO1), ANTI-B (ABO2), ANTI-A,B (ABO3), ANTI-D (RH1) IgM I, NEG CONTROL

Ready-to-use red blood cells (5 %)*

HEMATEST A1, B	58950	2 x 5 mL (100 tests)
HEMATEST A1, A2, B, O	51999	4 x 5 mL (100 tests)

Internal Quality Control*

HEMA CQI	59500	4 x 4 mL
----------	-------	----------

See details on page 29





The most complete Anti-D

Designation	Reference	Quantity	Clones
ANTI-D (RH1) TOTEM 2 clones IgM, 2 clones IgG Weak D detection in tube and slide techniques at room temperature Weak D detection in IAT (Indirect Antiglobulin Test) Detection of the most frequent partial D (DVI) at room temperature	71010	5 x 10 mL	P3x61 + P3x21223B10 + P3x290 + P3x35
ANTI-D (RH1) TOTEM	70544	100 x 10 mL	P3x61 + P3x21223B10 + P3x290 + P3x35

Weak D detection

ANTI-D (RH1) IgG I.A.T (Indirect Antiglobulin Test)	71020	5 x 10 mL	HM16
--	-------	-----------	------

Complementary reagents

ANTI-D (RH1) IgM I	71000	5 x 10 mL	P3x61
ANTI-D (RH1) IgM II	71005	5 x 10 mL	HM10



MANUAL RANGE

For the detection and identification of partial D Rhesus

Designation	Reference	Quantity	Clones
D-SCREEN	71194	9 x 2 mL	For research use

Kit of 9 monoclonal anti-D for identification of partial D: 5 IgG and 4 IgM (Frozen)

N°	Clone	Type	Partial D										
			II	IIIa IIIb IIIc	IVa	IVb	Va	VI	VII	DFR	DBT	Ro-Har	HMi
1	HM10	IgM	+	+	+	+	+	-	+	-	+	-	+
2	HM16	IgG	+	+	+	+	+	-	+	-	+	+	+
3	P3x61	IgM	+	+	+	+	+	-	+	±	+	+	+
4	P3x35	IgG	+	+	+	+	-	-	+	-	-	-	+
5	P3x21211F1	IgM	+	+	+	+	+	-	-	-	+	-	-
6	P3x21223B10	IgM	-	+	-	-	+	+	+	+	-	-	+
7	P3x241	IgG	+	+	+	+	-	-	+	±	-	-	+
8	P3x249	IgG	+	+	-	-	+	-	+	+	-	-	+
9	P3x290	IgG	+	+	±	-	+	±	+	+	-	-	+





RH-Kell phenotyping

Designation	Reference	Quantity	Clones
ANTI-C (RH2)	74221	4 x 5 mL	P3x25513G8 + MS24
ANTI-E (RH3)	74311	4 x 5 mL	906
ANTI-c (RH4)	74011	4 x 5 mL	951
ANTI-e (RH5)	74611	4 x 5 mL	P3GD512 + MS63
ANTI-K (KEL1)	74711	4 x 5 mL	MS56
ANTI-DCE (RH1,2,3)	74111	5 x 5 mL	P3x25513G8 + P3x61 + P3x234
NEG CONTROL	79000	5 x 10 mL	Negative control

RH-Kell phenotyping kit

PHENOKIT 74911 5 x 5 mL See clones above

Includes ANTI-C (RH2), ANTI-E (RH3), ANTI-c (RH4), ANTI-e (RH5), ANTI-K (KEL1)



MANUAL RANGE

Disposable white plates for grouping, phenotyping and reverse typing

Designation	Reference	Quantity	Configuration
NACRYL PAD	90255	1	Adaptable for all Nacryl configuration
NACRYL 5	90225	100	5 x 5 wells
NACRYL 6	90226	100	5 x 6 wells
NACRYL 7	90227	100	5 x 7 wells
NACRYL 9	90229	100	5 x 9 wells
NACRYL 10	90230	100	5 x 10 wells
NACRYL 12	90232	100	5 x 12 wells
BIOPALINE	90527	100	2 x 5 wells

Associated material

Securitubes <i>Blood segment device</i>	96226	1 000 units
Vials holder	91347	1 unit

Steps of the manual Nacryl tests

Mix of Red Blood Cells suspension with antisera



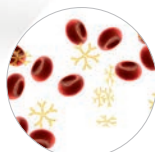
Gentle shaking



Reading and interpretation



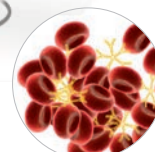
No agglutination



Neg



Agglutination



Pos



Extended phenotyping

Designation	Reference	Quantity	Clones	Type
ANTI-Cw (RH8)	78013	1 x 3 mL	MS110	IgM
ANTI-Fya (FY1)	78014	1 x 3 mL	DG-FYA-02	IgG
ANTI-Fyb (FY2)	78015	1 x 3 mL	SpA264LBg1	IgM
ANTI-Jka (JK1)	78003	1 x 3 mL	P3HT7	IgM
ANTI-Jkb (JK2)	78004	1 x 3 mL	P3.143	IgM
ANTI-M (MNS1)	78005	1 x 3 mL	2514E6	IgG
ANTI-N (MNS2)	78006	1 x 3 mL	1422C7	IgG
ANTI-S (MNS3)	78007	1 x 3 mL	P3S13JS123	IgG
ANTI-s (MNS4)	78008	1 x 3 mL	P3YAN3	IgG
ANTI-Lea (LE1)	78009	1 x 3 mL	13643B9	IgM
ANTI-Leb (LE2)	78010	1 x 3 mL	GX336	IgM
ANTI-P1	78011	1 x 3 mL	650	IgM
ANTI-k (KEL2)	78016	1 x 3 mL	P3A118OL67	IgG
NEG CONTROL	79000	5 x 10 mL	Negative control	



MANUAL RANGE

Indirect / Direct Antiglobulin Tests

Designation	Reference	Quantity	Clones
AGH MAESTRIA C3D	76118	4 x 5 mL	12011D10
AGH MAESTRIA IGG	76218	4 x 10 mL	18833 + 18896
AGH MAESTRIA IGG + C3D	76318	4 x 10 mL	18833 + 18896 + 12011D10



Enzymes - Buffer

Designation	Reference	Quantity	Clones
PALERM	69015	1 x 10 mL	Ready-to-use papain
LISS	69013	1 L	Low Ionic Strength Solution (L.I.S.S.)

QUALITY CONTROLS

INTERNAL QUALITY CONTROLS

ABO-D typing and Rhesus-Kell

Designation	Reference	Quantity
HEMA CQI * (A, B, AB, O)	59500	4 x 4 mL

Designation	Group	Phenotyping		Antibodies	
		D- C- E- c+ e+	K -		
HEMA CQI 1	AB	RH-1, -2, -3, 4, 5	KEL - 1		
HEMA CQI 2	B	D+ C+ E- c- e+	K -	Anti-A (ABO1)	
HEMA CQI 3	O	RH 1, 2, 3, 4, 5	K +	Anti-A (ABO1)	Anti-B (ABO2)
HEMA CQI 4	A	D+ C- E+ c+ e-	K -		Anti-B (ABO2)



Antibody Screening

SERA CQI Only for E.M. [®] Technology	59502	3 x 5 mL
ABS IQC All methods except E.M. [®] Technology	59507	3 x 5 mL

Designation	Antibodies	Results
SERA CQI 1	Anti-D (RH1)	4+
SERA CQI 2	Anti-Fya (FY1)	1+
SERA CQI 3		-

Direct Antiglobulin Test (all methods)*

CQI TDA 1 IQC-IgG sample, 1 IQC-C3d sample	59509	2 x 6 mL
---	-------	----------

*On subscription

QUALITY CONTROLS

QUALITY CONTROLS

EXTERNAL QUALITY CONTROLS

Subscription to the External Quality Assessment scheme

NEW

Do you need further assistance in your accreditation process?

DIAGAST works with UCIL (Interlaboratory Control Unit) and proposes you 4 External Quality Assessment campaigns per year.

These quality controls cover a wide range of tests:

- Grouping
- Phenotyping
- Direct Antiglobulin Test
- Antibody Screening
- Antibody Titration
- Extended phenotyping
- Single antigens typing (Cw, M, N, Lea, Leb, P1, Lua, Lub)
- Crossmatch
- Elution

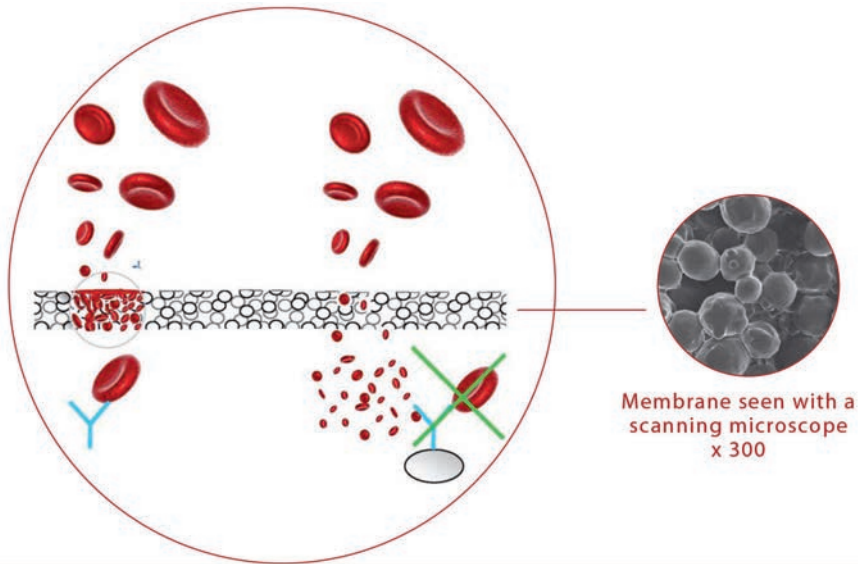
All controls are available regardless of the used technique.

For additional information, please contact eeq@diagast.com



BEDSIDE CARD

ABTest Card® is a bedside card based on the principle of M-Trap® Technology, by fixing red blood cells on a porous membrane that contains anti-A and anti-B antibodies, holding red blood cells with the corresponding Antigen. Negative results give a clear green signal and the positive results are red. This patented French technology that won the «Trophy for innovation» at JIB congress in November 2012, reduces analysis time, standardizes and reproduces results for a significant simplification of the procedure.

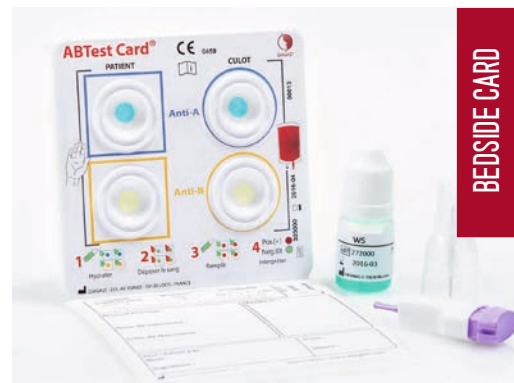


ABTest Card®

Designation	Reference	Quantity
ABTest Card® 1 x ABTest Card® + 1 x vial of washing solution + 1 x safety lancet + 1 x blood segment device	79070	100 kits

Training kit

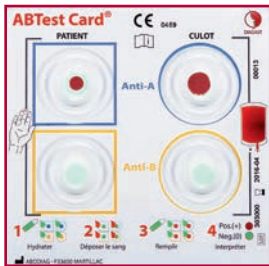
Designation	Reference	Quantity
ABTest Card® Training CD	99013	1
ABTest Card® Training Kit	99015	1
1 x XXL card (1.20 m x 0.61 m) with repositionable pictures + a compatible erasable marker + 1 x training CD		
Educational Training Pack	99021	1
10 x Simplified Protocol 99017 + 50 x Check-list 99018 + 10 x Troubleshooting 99019		



BEDSIDE CARD

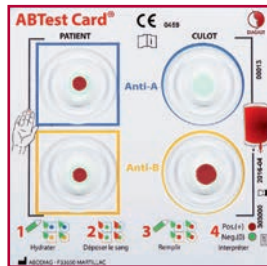
BEDSIDE CARD

Examples of reactions



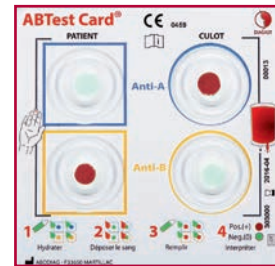
According to the ABO compatibility rules, transfusion may proceed

Compatible



According to the ABO compatibility rules, transfusion may proceed

Compatible



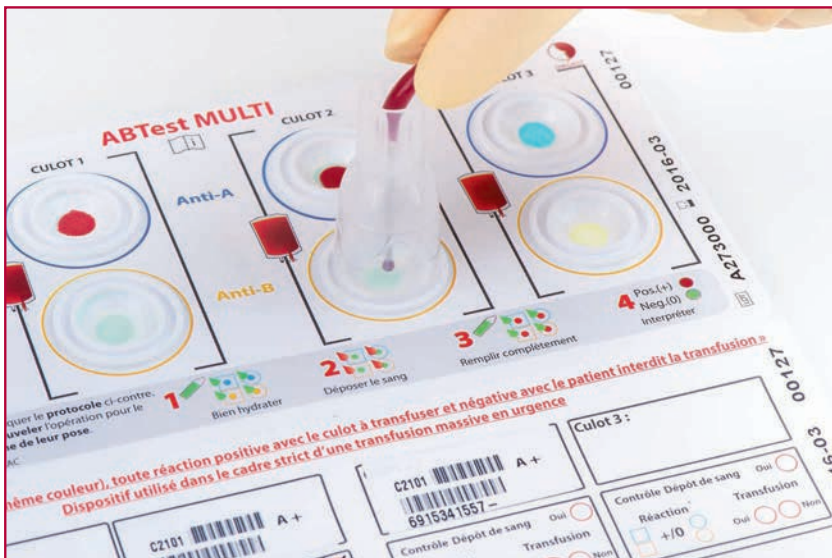
According to the ABO compatibility rules : transfusion may not proceed

Incompatible

ABTest MULTI NEW

Device for emergency and massive transfusion. Minimum 3 RBC units for the same patient. Shelf life after opening : 1h.

Designation	Reference	Quantity
ABTest MULTI	79080	25 kits (3 tests / card)
1x ABTest MULTI + 2 x vials of washing solution + 1 x safety lancet + 3 x blood segment devices		



Training Kit

Designation	Reference	Quantity
ABTest MULTI Training kit	99022	1
10 x simplified protocole 99023 - 1 training CD 99024		



Safety card

Designation	Reference	Quantity
SAFETY TEST ABO 1 SAFETY CARD AB + 1 SAFETY PACK, (1 safety lancet + 1 blood segment device + 1 vial of isotonic saline solution + 4 stirrer-pipettes)	79069	100 kits
SAFETY CARD AB (Deutsch)	79076	100 cards
SAFETY CARD AB (Latvian)	79075	100 cards



Examples of reactions

<p>According to the ABO compatibility rules, transfusion may proceed</p> <p>Compatible</p>	<p>According to the ABO compatibility rules, transfusion may proceed</p> <p>Compatible</p>	<p>According to the ABO compatibility rules : transfusion may not proceed</p> <p>Incompatible</p>
---	---	--

BEDSIDE CARD

Training kit

Designation	Reference	Quantity
SAFETY CARD Training kit	99011	1 Kit

This training kit includes: 1 card XXL (1.20m x 0.85m) with repositionable pictures, compatible erasable marker (1 marker included) 1 training CD including: Powerpoint presentation, Quiz for evaluation, Photo instruction, Video, Troubleshooting Guide

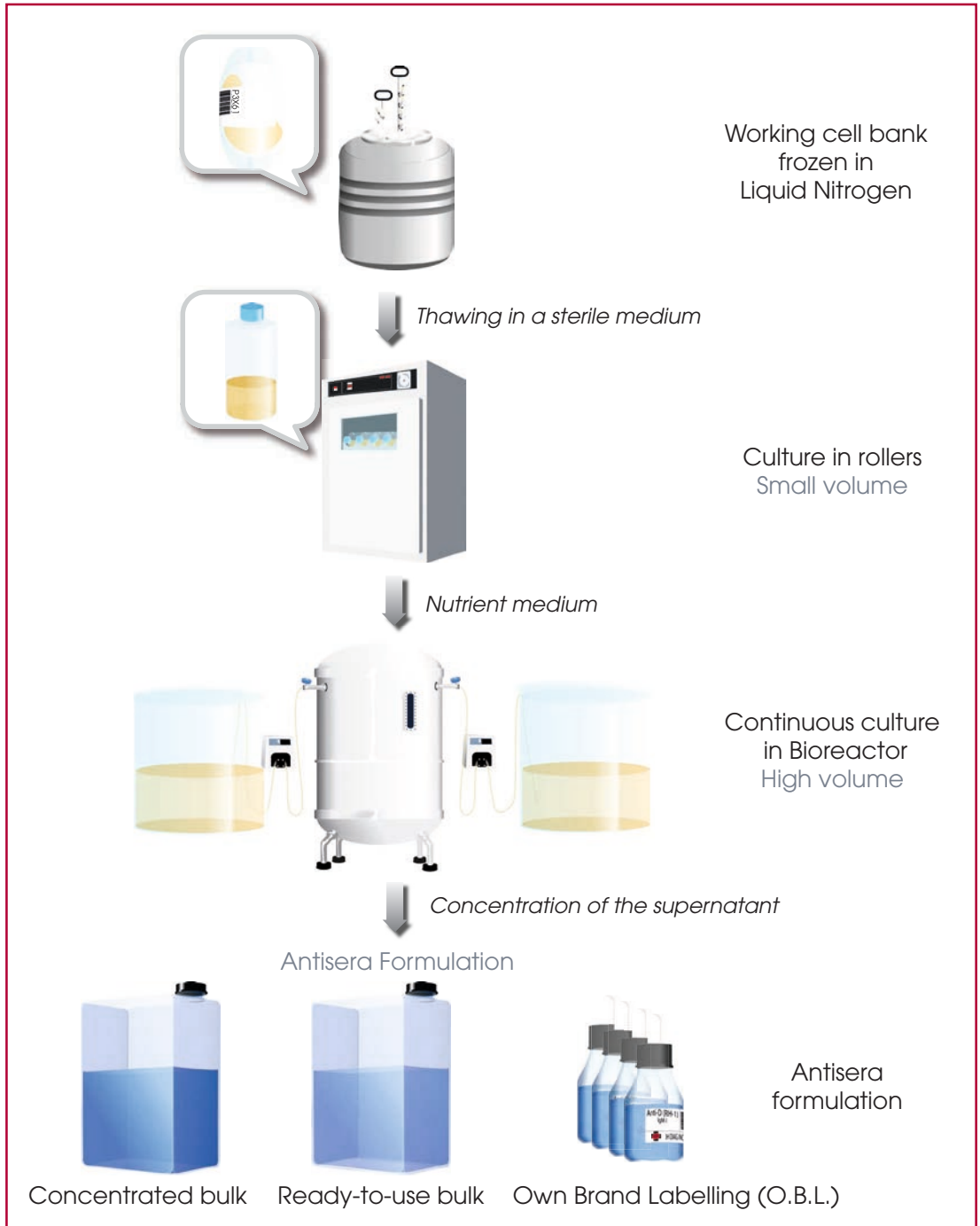
OEM RANGE





Your O.E.M. partner using tomorrow's technology for optimum transfusion safety

- From blood grouping to extended phenotyping
- Concentrated bulk For Further Manufacturing Use (F.F.M.U.)
- From standard one to finished product filled and packaged according to your specifications



Grouping

Designation	Reference	Clones	Type
ANTI-A CONCENTRATE BULK	70115	9113D10	IgM
ANTI-B CONCENTRATE BULK	70215	9621A8	IgM
ANTI-A,B CONCENTRATE BULK	70315	152D12 + 9113D10	IgM
ANTI-D IGG CONCENTRATE BULK	71105	P3x290	IgG
ANTI-D IGM CONCENTRATE BULK	71115	P3x61	IgM
ANTI-D IGM CONCENTRATE BULK	71125	P3X21223B10	IgM
ANTI-D IGG CONCENTRATE BULK	71135	P3x35	IgG
ANTI-D IGM CONCENTRATE BULK	80460	HM10	IgM
ANTI-D IGG CONCENTRATE BULK	80461	HM16	IgG

Phenotyping

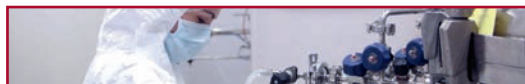
ANTI-C CONCENTRATE BULK	71150	P3X25513G8	IgM
ANTI-E CONCENTRATE BULK	71152	906	IgM
ANTI-c CONCENTRATE BULK	80446	951	IgM
ANTI-e CONCENTRATE BULK	80445	P3GD512	IgM
ANTI-K CONCENTRATE BULK	80447	601	IgG

Extended phenotyping

ANTI-P1 CONCENTRATE BULK	71140	650	IgM
ANTI-Fyb (FY2) CONCENTRATE BULK	80477	SpA264LBg1	IgM

Diluent

DILUTION X5	80555		
-------------	-------	--	--



Grouping

Designation	Reference	Clones	Type
ANTI-A DIAGAST BULK	70111	9113D10	IgM
ANTI-B DIAGAST BULK	70211	9621A8	IgM
ANTI-A,B DIAGAST BULK	70311	152D12 + 9113D10	IgM
ANTI-D IGM DIAGAST BULK	71111	P3x61	IgM
ANTI-D IGM DIAGAST BULK	80449	HM10	IgM
ANTI-D IGG DIAGAST BULK	71151	P3X290	IgG
ANTI-D IGG DIAGAST BULK	71171	HM16	IgG
ANTI-D TOTEM DIAGAST BULK	71101	P3x61 + P3X21223B10 + P3x290 + P3x35	2 IgM + 2 IgG
NEGATIVE CONTROL DIAGAST BULK 79011			

Phenotyping

ANTI-C DIAGAST BULK	80415	P3X25513G8	IgM
ANTI-C DIAGAST BULK	80448	P3X25513G8+MS24	IgM
ANTI-E DIAGAST BULK	80410	906	IgM
ANTI-c DIAGAST BULK	80441	951	IgM
ANTI-e DIAGAST BULK	80423	P3GD512+MS63	IgM
ANTI-K DIAGAST BULK	80412	601	IgG
ANTI-K DIAGAST BULK	80419	MS56	IgM
ANTI-DCE DIAGAST BULK	80464	P3X25513G8+P3X61+P3X234	IgM

Diluent

DILUTION X5	80555
-------------	-------

Extended phenotyping

Designation	Reference	Clones	Type
ANTI-Fya (FY1) DIAGAST BULK	80442	DG-FYA-02	IgG
ANTI-Fyb (FY2) DIAGAST BULK	80450	SpA264LBg1	IgM
ANTI-M (MNS1) DIAGAST BULK	80432	2514E6	IgG
ANTI-N (MNS2) DIAGAST BULK	80433	1422C7	IgG
ANTI-Jka (JK1) DIAGAST BULK	80434	P3HT7	IgM
ANTI-Jkb (JK2) DIAGAST BULK	80435	P3.143	IgM
ANTI-Lea (LE1) DIAGAST BULK	80436	13643B9	IgM
ANTI-Leb (LE2) DIAGAST BULK	80437	GX336	IgM
ANTI-S (MNS3) DIAGAST BULK	80438	P3S13JS123	IgG
ANTI-s (MNS4) DIAGAST BULK	80443	P3YAN3	IgG
ANTI-P1 DIAGAST BULK	80444	650	IgM
ANTI-k (KEL2) DIAGAST BULK	80452	P3A118OL67	IgG
ANTI-CW DIAGAST BULK	80463	MS110	IgM

Antiglobulins - Enzymes - Buffer

Maestria (polyspecific IgG + C3d)	80420	18833 + 18896 + 12011D10
Antiglobulin anti-C3d monoclonal	80421	12011D10
Maestria IgG (mono spécifique IgG)	80422	18833 + 18896
BROMELINE 100 mL	69023	
PAPAIN LIQUID R.T.U.	69019	

Other Reagents

A and B Substances	69723
--------------------	-------

The DIAGAST training centre welcomes nearly one hundred trainees each year and achieves a very high satisfaction rating. Besides courses in the use of DIAGAST products, our immunohaematology and quality experts offer a number of different options depending on your requirements, ranging from basic to advanced sessions.

QWALYS® TRAINING

- QWALYS® User Training Module **ref 91952**

This course is designed for QWALYS® users and performed in your laboratory. The aim of the course is to be able to successfully perform QWALYS® immunohaematology assays.

- QWALYS® Referent Training Module **ref 90950**

This course is designed for QWALYS® users. The aim of the course is to become a QWALYS® referent. This expertise includes day-to-day operational management, troubleshooting, maintenances and curative action.

IMMUNOHAEMATOLOGY TRAINING

DIAGAST shares its 30 years of experience in immunohematology through 2 days trainings are leaded by experts in their discipline.

- Immunohaematology Accreditation Module **ref 91380**

Based on the ISO 15189 standard, this course is designed for biologists, quality managers and laboratory technicians. The aim of the course is to understand the specific immunohaematology quality requirements and to know how to manage the pre-analytical, analytical and post-analytical steps in immunohaematology, whatever the laboratory equipment.

- Applied immunohaematology Module **ref 91404**

This course is designed for biologists and laboratory technicians, whatever your equipment. The aim of this course is to review knowledges and skills required to perform or to implement major assays as well as specific technics in immunohaematology, in your laboratory.



TRAINING CENTRE

SERVICES AVAILABLE on-site in your laboratory (international)

- QWALYS® Installation and Curative Maintenance

Ref 91379 / 91376 / 91375

This service covers the installation of the QWALYS® by the DIAGAST team and troubleshooting

Training Services

- QWALYS® Operator Training

Ref 91388

for international customer end users

- QWALYS® Product Specialist Training

Ref 91389

for distributors

- QWALYS® FSE

Ref 91390

for distributors' field service engineers

- DIAGAST Audit

Ref 91391

Needs assessment, issue identification and solution preparation; Performance optimisation advice; Action plan definition and proposal for appropriate application support.





DIAGAST

The blood matching company

251, avenue Eugène Avinée
Parc Eurasanté
59120 LOOS - FRANCE
www.diagast.com